

JEDEC TYPE DESIGNATION REGISTRATION FORM TR TUBESManufacturers Designation: MAF-48

Date: 8-14-62

JEDEC Designation: 8330Manufacturer: Metcom, Inc., Salem, Mass.General Characteristics

The 8330 is a dual broad band TR tube designed to effectively decouple the receiver from a common transmitting and receiving antenna during a period of transmission. Its operational band is from 8490 to 9578 megacycles.

Special Features:

The 8330 when used with the 8331 maintain phase shift within 4 degrees.

Electrical Data - Typical Values

Operational Band VSWR 1.5 max.	8490 to 9578 Mc
Ignitor Ignition Time	5.0 sec.
Ignitor Voltage Drop at $I_i=100\mu\text{A dc}$	-175 to -500 volts
Spike Leakage Energy at 9000Mc, $p_o=40\text{ kw}$	0.2 erg
Flat Leakage Power at 9000Mc, $p_o=40\text{kw}$	60 mw
Arc Loss at 9000Mc, $p_o=40\text{kw}$	0.6 db
Recovery Time at 250 kw peak, 3 db down	3.0 usec
High Level VSWR 1.2 max.	9000 Mc/s

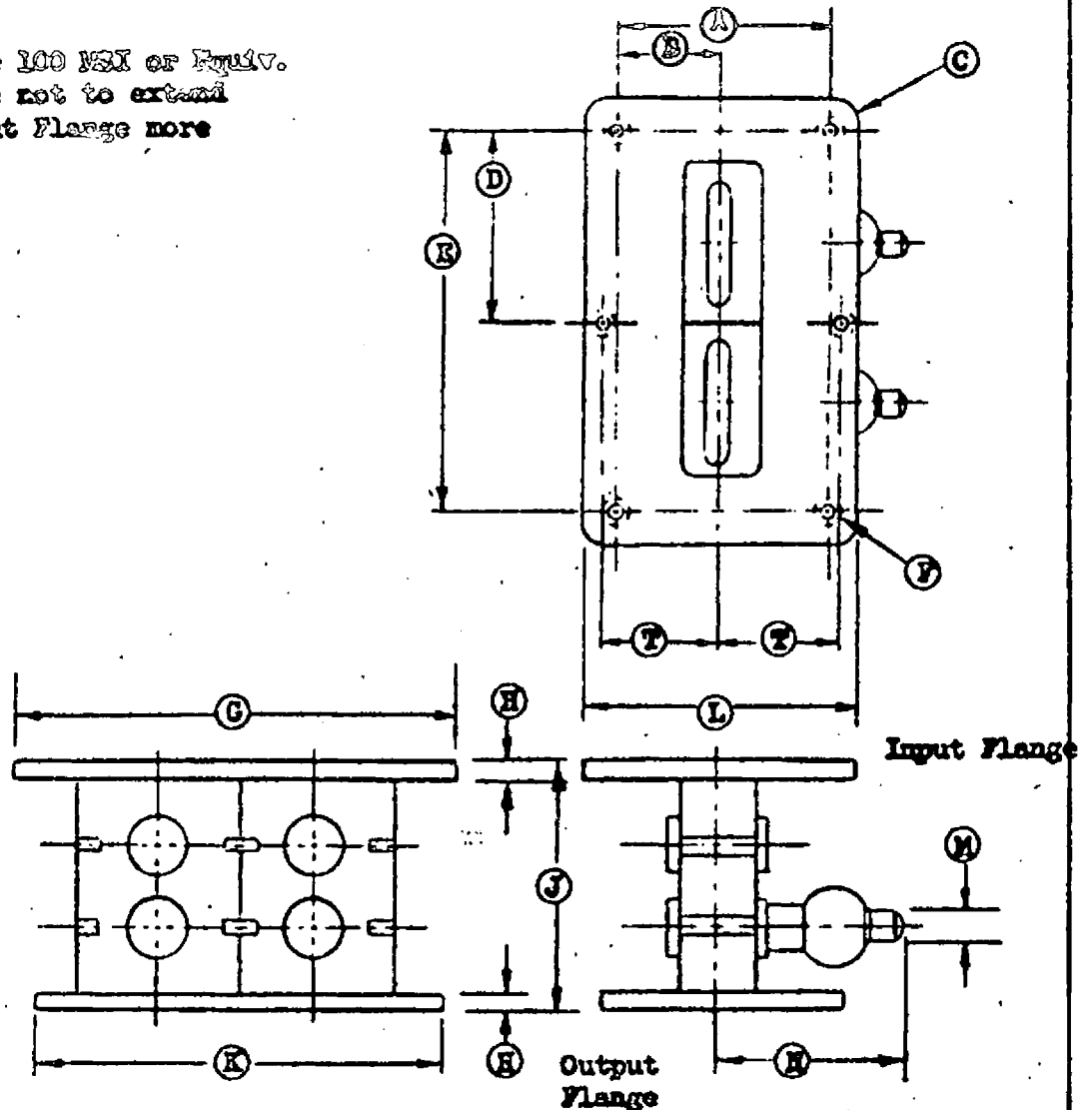
Mechanical Data - General

Outline dimensions	See Outline dated 1-29-60
Mounting Position	Any
Weight, approximately	8 oz.

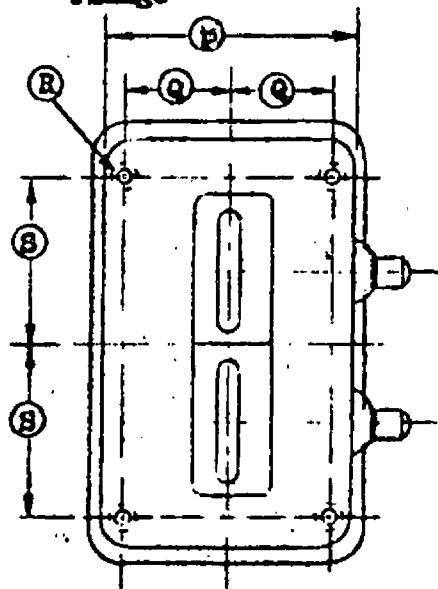
Absolute Maximum Ratings

Transmitter Peak Power	500 kw
Ignitor Current	100 to 200 $\mu\text{A dc}$
Open Circuit Ignitor Voltage min.	-700 Vdc
Operating Temperature max.	+100°C

Silver Plate 100 MSI or Equiv.
 Exhaust Tube not to extend
 beyond Output Flange more
 than 1/4".



Ref.	Dimension in Inches
A*	1.474 ±.004
D*	0.737 ±.003
C**	0.13 ±.015
D*	1.269 ±.003
E*	2.538 ±.004
F	#8-32NC-2B 6 Holes
G**	3.062 ±.010
H**	0.200 ±.010
J	1.555 ±.010
K**	2.575 ±.015
L**	1.875 ±.010
M**	0.250 Dia.
N*	1-3/8 Max.
P**	1.620 ±.010
Q*	0.640 ±.002
R	#8-32NC-2B 4 holes
S*	1.065 ±.003
Q**	0.805



Tentative	SPECIFICATION SHEET		MICROWAVE ELECTRONIC TUBE CO. INC. 76 LAFAYETTE ST. SALEM, MASS.
	Outline	Type 8330	