

JETEC TYPE DESIGNATION REGISTRATION FORM

TR TUBES

Manufacturer's Designation: BL-87
JETEC Designation: 6636
Manufacturer: Bomac Laboratories, Inc.
Beverly, Massachusetts

March 8, 1957

GENERAL CHARACTERISTICS

The 6636 is a dual broad-band gas switching tube designed to operate with suitable short-slot hybrid junctions to provide a balanced duplexer using RG48/U size waveguide. It is an integral cavity type with an operational band from 2700 to 2900 megacycles.

ELECTRICAL DATA TYPICAL VALUES

Operational Band	
VSWR 1.2 maximum	2700 to 2900 Mc/sec.
Ignitor Ignition Time (max.)	5 sec.
Ignitor Voltage Drop at $I_i=200\mu\text{A dc}$ (measured separately on each electrode)	200-400 volts
Spike Leakage Energy (max.)	0.1 ergs
$F=2800\text{Mc}$; $p_o=200\text{kw}$; $t_{p1}=1.0\mu\text{s}$ $t_{p2}=0.5\mu\text{s}$; $p_{rr}=1000\text{pps}$ $I_i=200\mu\text{A dc}$ on each electrode	
Flat Leakage Power (max.)	20 mw
(see Spike Leakage for test conditions)	
Duplexer Loss (max.) from 2700 to 2900Mc and $I_i=200\mu\text{A dc}$ on each electrode	0.9 db
Isolation (min.) from 2700 to 2900Mc.	20 db
Recovery Time (max.) at 750 kw peak 3db down	15 μsec .
High Level VSWR (max.)	1.15
$F=2800\text{Mc}$; $p_o=50\text{kw}$; $t_{p1}=1.0\mu\text{s}$; $p_{rr}=1000\text{pps}$; $I_i=200\mu\text{A dc}$ on each electrode	

MECHANICAL DATA-GENERAL

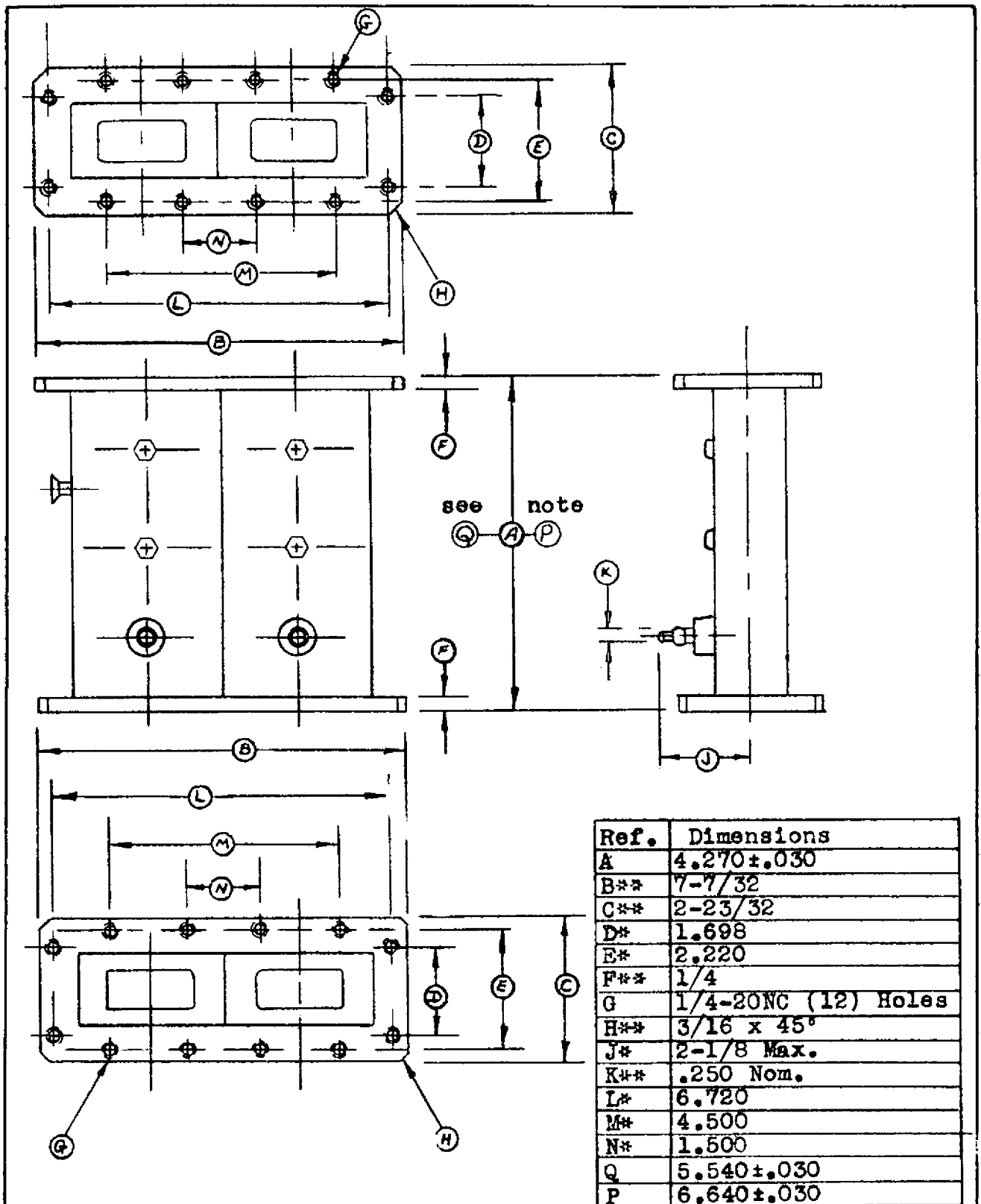
Mounting Position	Any
Number of Electrodes	Two
Weight, approximately	5.25 lbs.

ABSOLUTE MAXIMUM RATING

Transmitter Peak Power	750 kw
Transmitter Average Power	750 W
Ignitor Current (each electrode)	200 μ Adc

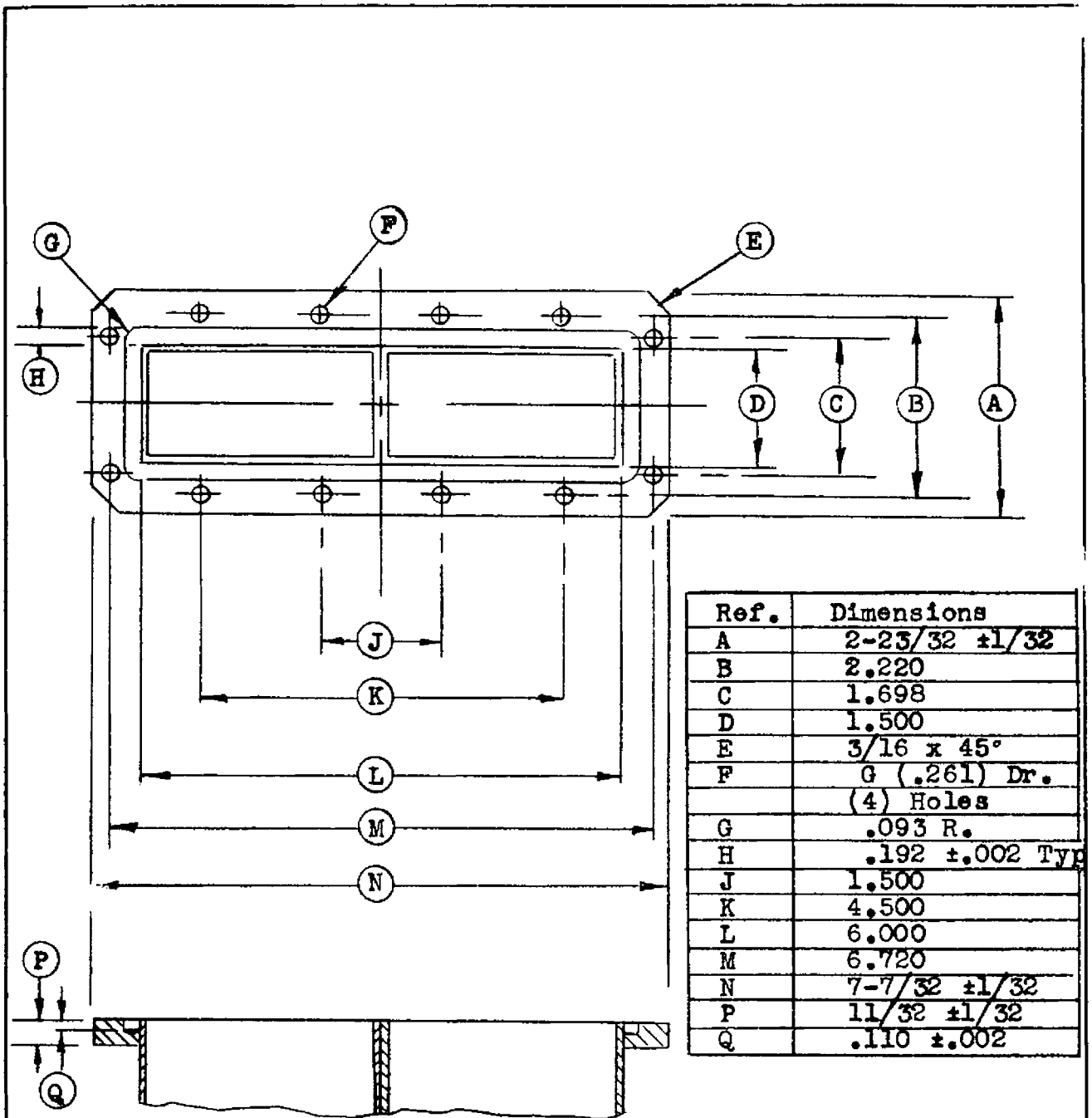
OUTLINE DRAWINGS

Outline as per attached drawing dated 6-15-56
Mating Flange as per attached drawing dated 10-20-54



Note:- Dimension A applies to BL-652 only.
 Dimension P applies to 6636/BL-87 only.
 Dimension Q applies to BL-638 only.

SPECIFICATION SHEET		BOMAC LABORATORIES INC. SALEM ROAD BEVERLY, MASSACHUSETTS
Outline		
BL-638, BL-652, 6636/BL-87		6-15-56 FOR



Ref.	Dimensions
A	2-23/32 ±1/32
B	2.220
C	1.698
D	1.500
E	3/16 x 45°
F	G (.261) Dr. (4) Holes
G	.093 R.
H	.192 ±.002 Typ
J	1.500
K	4.500
L	6.000
M	6.720
N	7-7/32 ±1/32
P	11/32 ±1/32
Q	.110 ±.002

Note:
 Used on the following:
 BL-638
 6636/BL-87
 BL-346
 BL-652
 BL-357

GS-2E-1.10.20.05	SPECIFICATION SHEET	BOMAC LABORATORIES INC. SALEM ROAD BF VERLY. MASSACHUSETTS
	MATING FLANGE	