

VACUUM TUBE PRODUCTS



VTP 17BC

The VTP 17BC cathode ray tube is an electro magnetic deflection and electrostatic focus type tube, providing high definition and intensity. The 17BC is designed with a zero focus type electron gun affording substantially automatic focus, independent of accelerator voltage variations. A metal backed screen is used to provide the ultimate when viewing is required at high ambient light levels. The metallic coating also provides freedom from ion burns. Assurance of long life is had through the exclusive Vacuum Tube Products method of long and careful exhaust. The VTP 17BC cathode ray tube is available with the following phosphors:

P 1, 2, 7, 11, 15, 19.

GENERAL CHARACTERISTICS

Heater Voltage								6.3 Volts
Heater Current								0.6 Amperes
Anode Voltage (conductive inner wall coating and G#3).....	16,000							Max. Volts D.C.
Grid #2 Voltage (accelerating electrode)	500							Max. Volts D.C.
Grid #1 Voltage (control electrode)								
Negative Bias Value	125							Max. Volts D.C.
Positive Bias Value	0							Max. Volts D.C.
Positive Peak Value	2							Max. Volts D.C.
Peak Heater to Cathode Voltage								
Heater Negative with respect to Cathode	125							Max. Volts D.C.
Heater Positive with respect to Cathode	125							Max. Volts D.C.
Focus								Electrostatic
Focus Voltage Range (Max.).....	plus or minus							500 Volts
Deflection								Magnetic
Deflection Angle (approximate).....								65 Degrees
Basing (RTMA) 12L	Small Shell							Duodecal 7 Pin
Pin No.	1	2	6	7	10	11	12	
Element	H	G#1	Focus	NC	G#2	K	H	

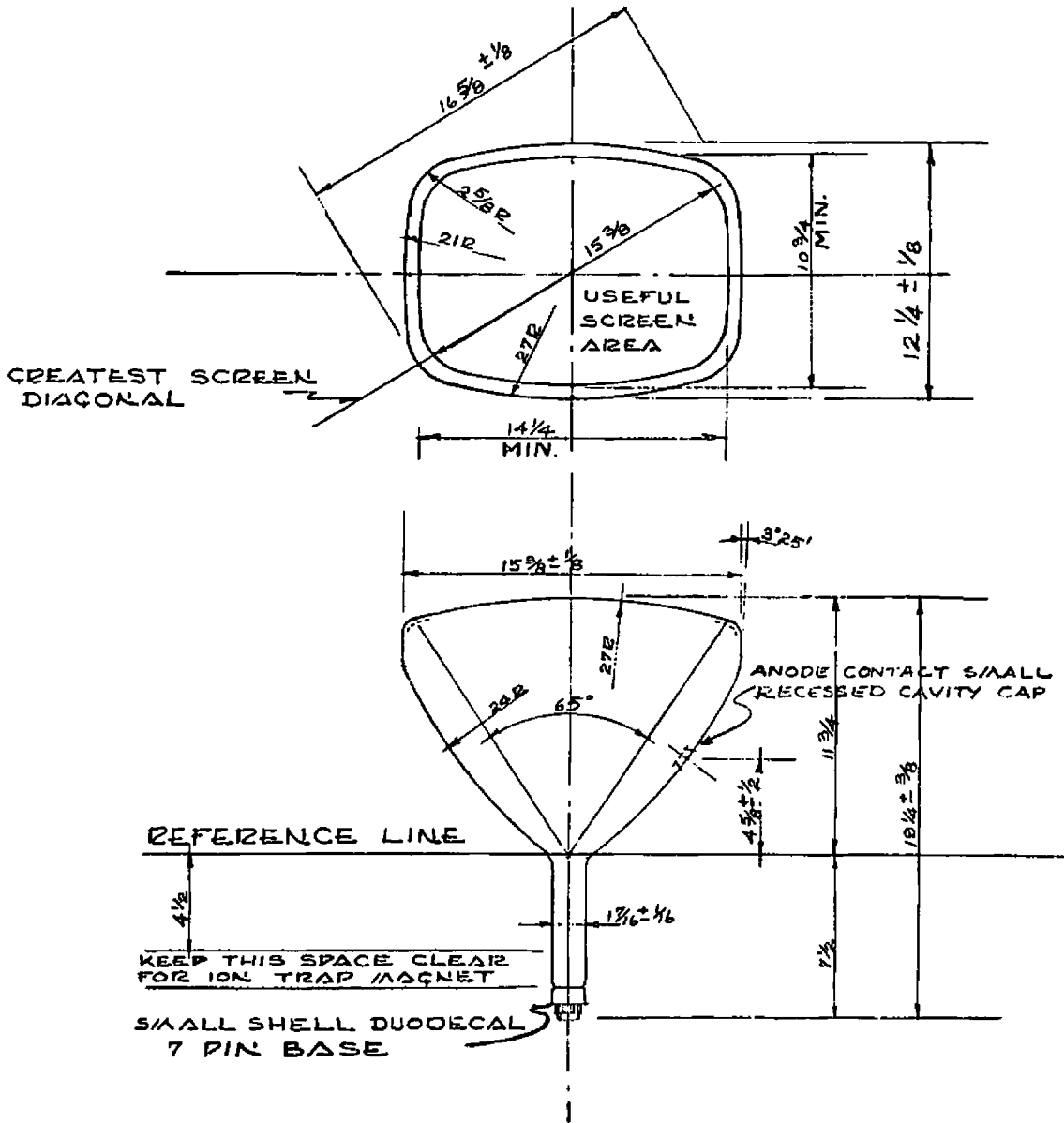
Anode contact is small recessed cavity in bulb wall.

TYPICAL OPERATION

Heater Voltage	6.3	Volts
Anode Voltage	12,000	Volts D.C.
Grid #2 Voltage	250	Volts D.C.
Grid #1 Voltage	-27 to -63	Volts
Focus Voltage	Zero	
Grid #1 Circuit Resistance		
Maximum	1.5	Megohms
Minimum	150	Ohms
Grid #2 Circuit Resistance	470	Min. Ohms
Anode Circuit Resistance	15,000	Min. Ohms

Note: Type VTP 17BC tube operates from power supplies that are dangerous.
The above circuit values are recommended as a safety measure.

VACUUM TUBE PRODUCTS, 506 SOUTH CLEVELAND STREET, OCEANSIDE, CALIFORNIA
FEB. 55 TELEPHONE: SARatoga 2-6567



NOTE: An ion trap is not required for 17BC types.