



Triode Type BR 137

HF AMPLIFIER AND OSCILLATOR

General. The BR 137 is a forced-air-cooled transmitting triode fitted with a tungsten filament.

Cooling. The anode requires forced air cooling. The air cooling and air flow characteristics given show the air inlet temperature °C/anode+grid loss; and air flow/air pressure.

The external grid and filament seals also require air cooling. The volume of air necessary is approximately 20 cu. ft. per minute and should be directed into the seals from above through a 1 in. nozzle. The temperature of the seals must not exceed 140°C and that of the anode 180°C.

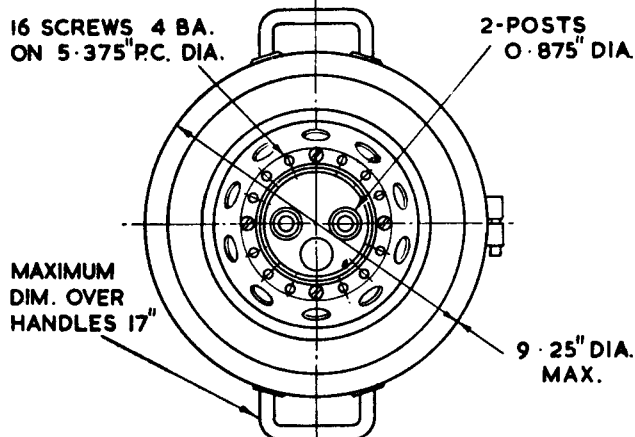
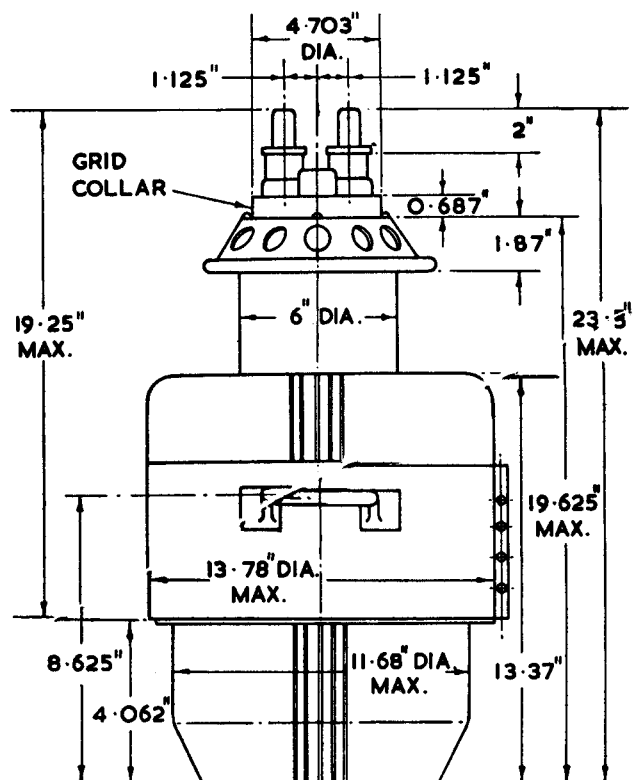
All air cooling supplies must be in operation before the application of any supply voltage and should be continued, for at least one minute, after the removal of all supply voltages.

Filament Starting. The cold filament resistance is approximately 0.0039 Ω. The filament current must not exceed 600 A at any time during the switching-on period.

APPROXIMATE DATA

V_f	18	V
I_f	400	A
V_a (max)	15	kV
P_a (max)	20	kW
P_{gl} (max)	3	kW
μ (taken at V_a 9 kV, I_a 2A)	40	
g_m (taken at V_a 10 kV, I_a 2A)	30	mA/V
f (max) (at full ratings)	50	Mc/s
C_{a-gl}	55	pF
C_{a-k}	2	pF
C_{gl-k}	80	pF

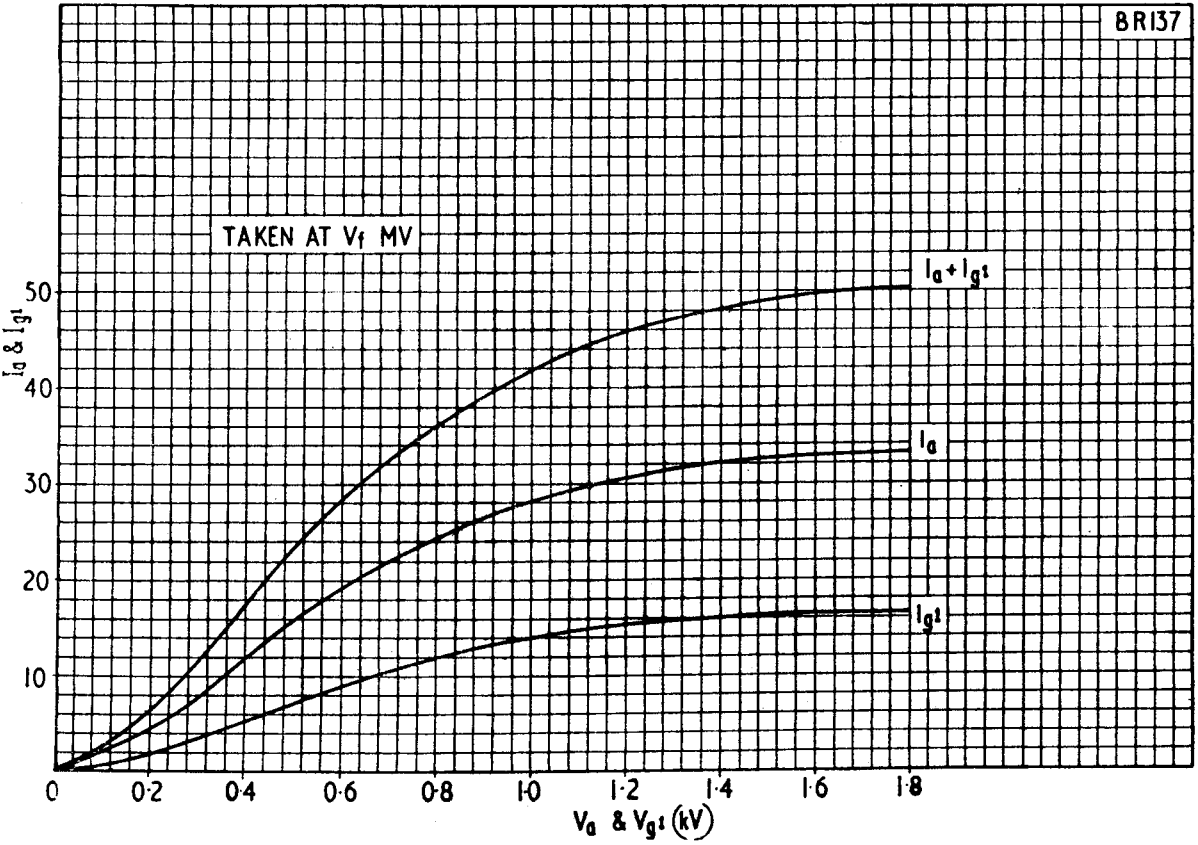
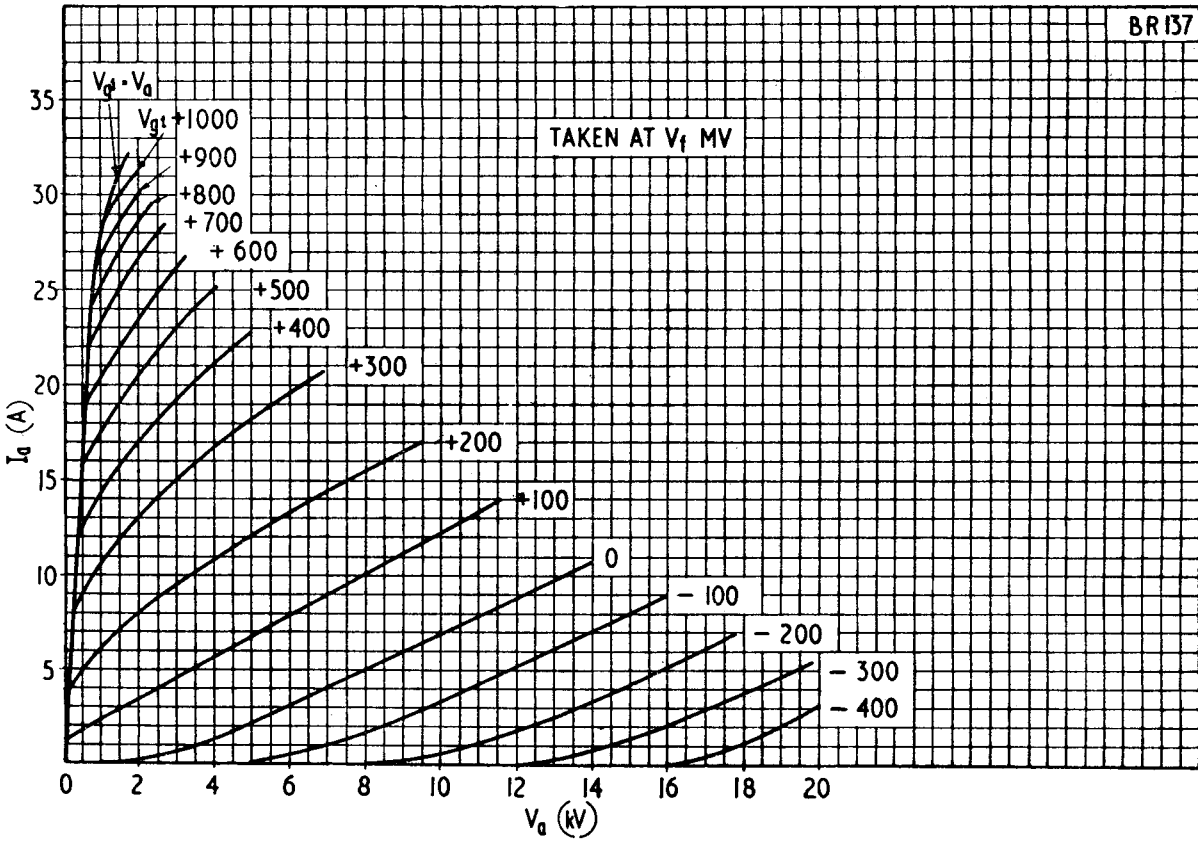
Marked Voltage. Each valve is marked with the filament voltage required to give 45 A peak emission at 90% saturation.

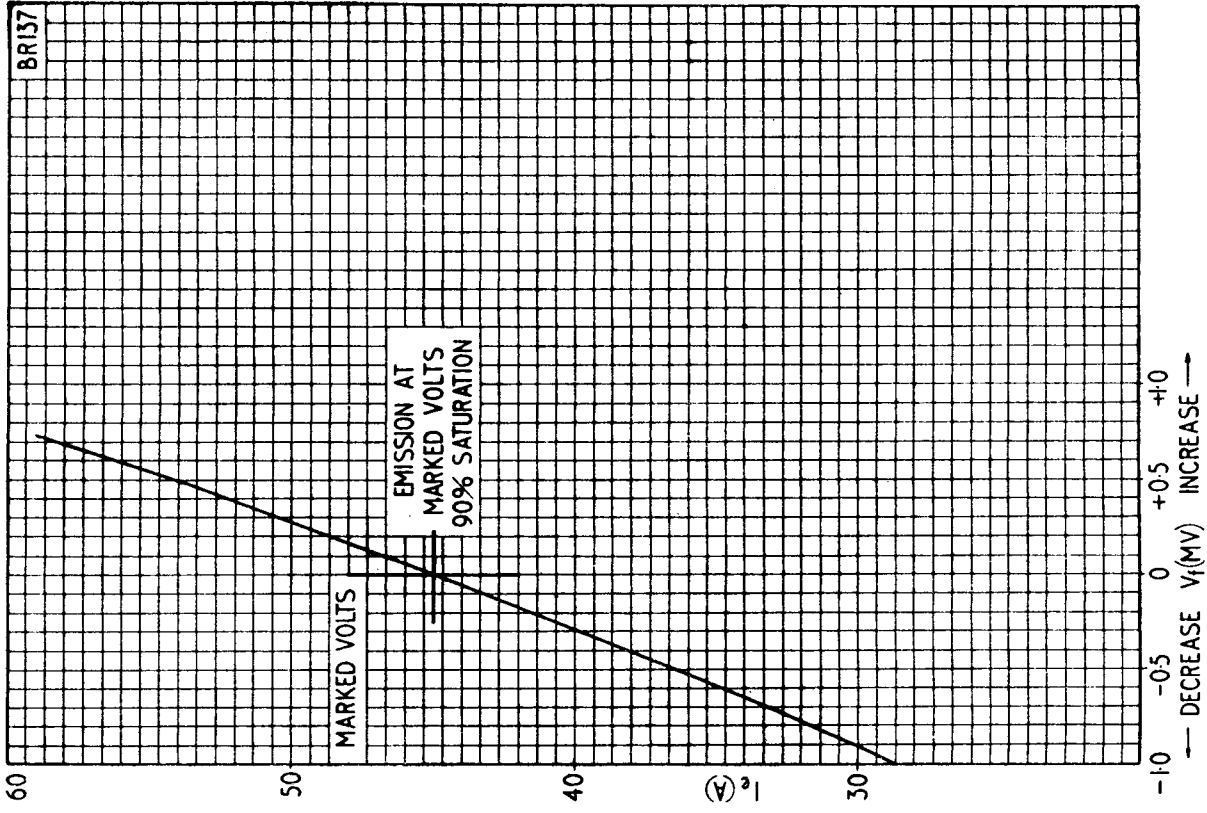
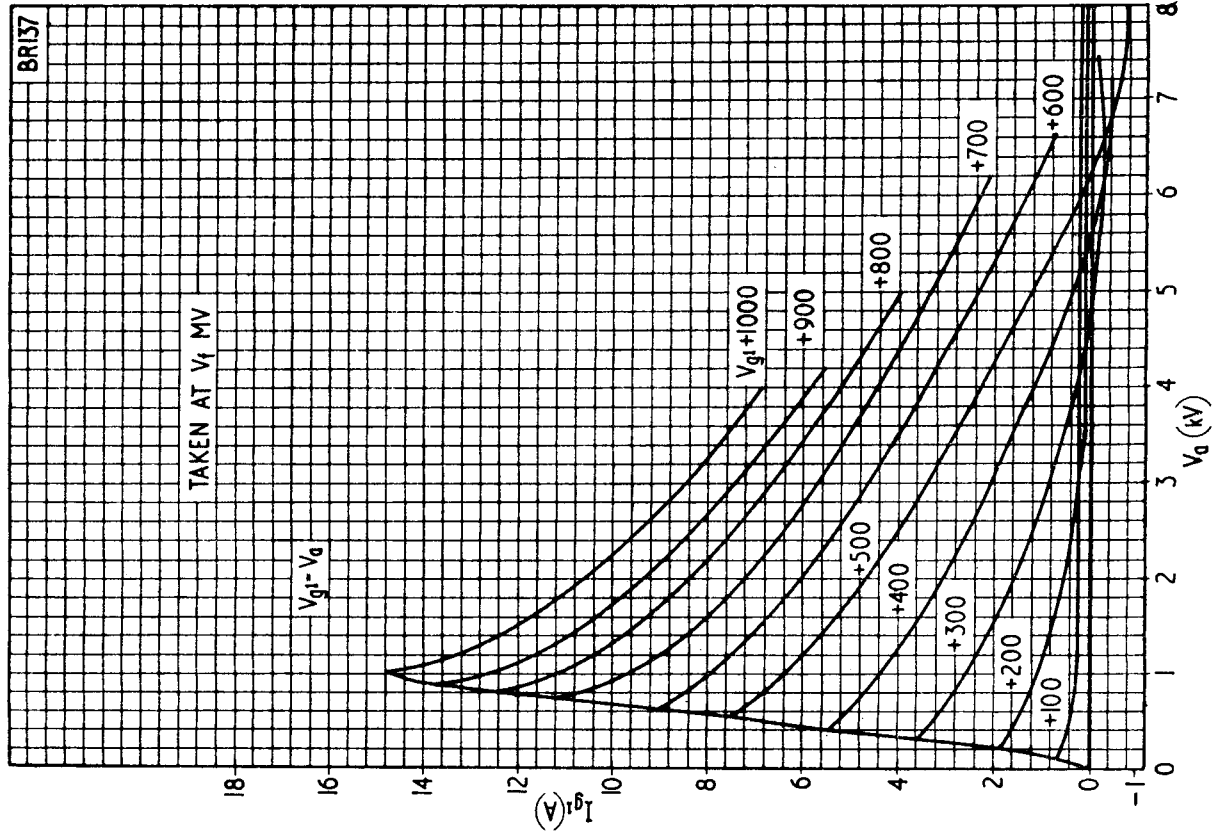


WEIGHT 196 lb. (89 kg.)

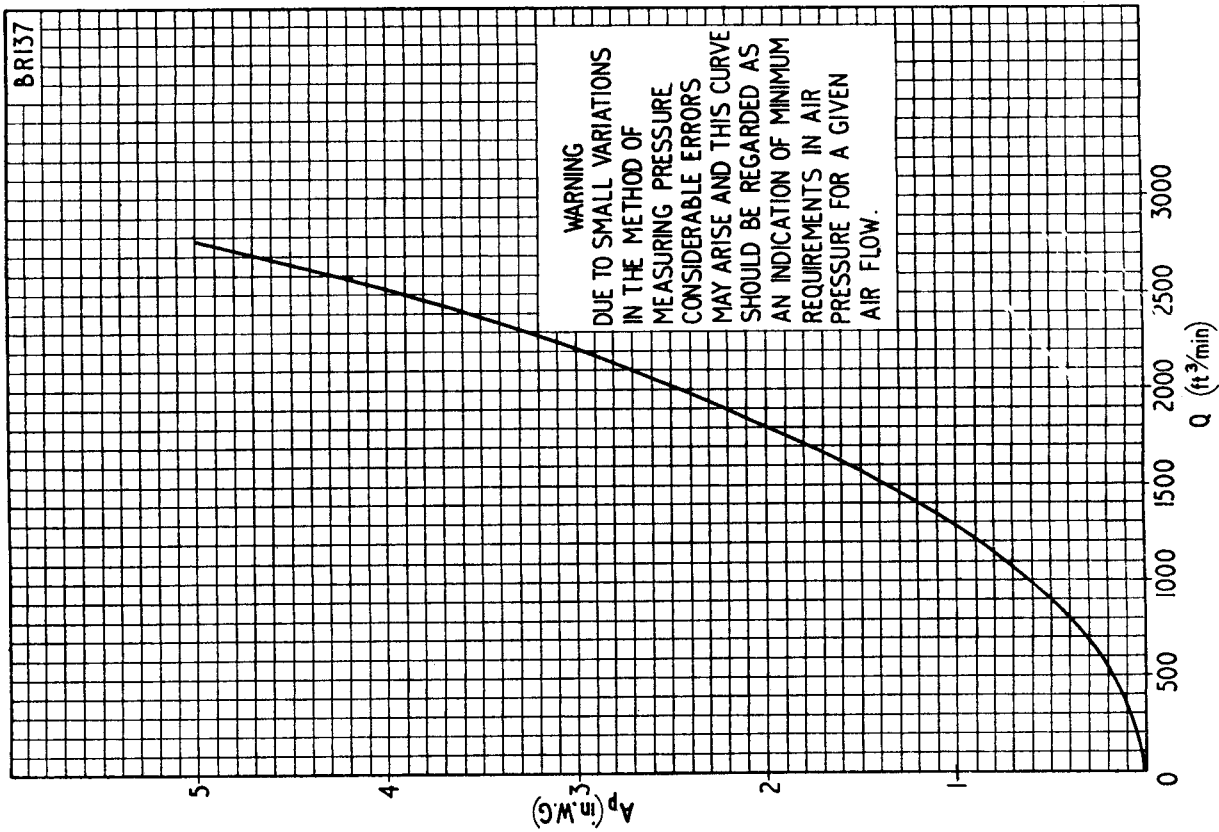
MARCONI'S WIRELESS TELEGRAPH COMPANY LIMITED

Head Office: Marconi House, Chelmsford, England, Telephone: Chelmsford 3221. Telegraphic Address: Expanse, Chelmsford





BR137



PRINTED IN ENGLAND

BR137

