



# OC2

## VOLTAGE STABILIZER

Service Type CV8766

The data to be read in conjunction with the Voltage Stabilizer Preamble.

### DESCRIPTION

The OC2 is a single gap cold cathode gas-filled voltage stabilizer with a B7G base. It is designed to provide a sensibly constant voltage output of 75 volts over the current range 5.0 to 30mA.

### GENERAL DATA

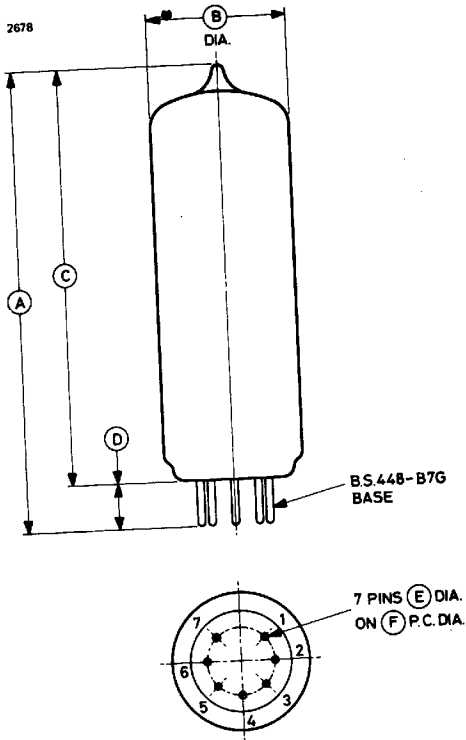
#### Characteristics

Striking voltage in normal lighting . . . . .	115	V max
Striking voltage in total darkness . . . . .	145	V max
Operating voltage (approx) . . . . .	75	V
Operating voltage at 30mA . . . . .	83	V max
Operating voltage at 5.0mA . . . . .	68	V min
Cathode current range . . . . .	5.0 to 30	mA
Regulation over current range . . . . .	4.5	V max
Noise (r.m.s.) (50 to 5000Hz) over the current range 5.0 to 30mA . . . . .	10	mV max
Voltage jumps over the current range 5.0 to 30mA . . . . .	1.0	V max
Ambient temperature range . . . . .	-55 to +90	°C

#### Mechanical

Overall length . . . . .	2.618 inches (66.5mm) max
Seated height . . . . .	2.366 inches (60.1mm) max
Overall diameter . . . . .	0.748 inch (19.0mm) max
Mounting position . . . . .	any
Base . . . . .	B.S.448-B7G

**OUTLINE (All dimensions without limits are nominal)**



Ref	Inches	Millimetres
A	2.618 max	66.5 max
B	0.748 max	19.0 max
C	2.366 max	60.1 max
D	0.281 max	7.14 max
E	0.040	1.02
F	0.375	9.53

Pin	Element
1	Anode
2	Cathode
3	Internal connection
4	Cathode
5	Anode
6	Internal connection
7	Cathode

Millimetre dimensions have been derived from inches.