

Beam Power Tube

CERMOLOX 17 kV, 40 Amperes Ruggedized
Matrix Cathode **Pulse Modulator** **Conduction Cooled**

ELECTRICAL

Heater^a, for Matrix-Type Oxide-Coated

Unipotential Cathode:

Voltage (ac or dc)	22 ± 2	V
Current at 22 volts	12.6	A
Minimum heating time	180	s
Mu-Factor, grid No.2 to grid No.1	6	

MAXIMUM CSS RATINGS, Absolute-Maximum Values

DC Plate Voltage	17 ^b	kV
Instantaneous Peak Plate Voltage (Pulse duration < 0.1 s)	22 ^b	kV
DC Peak Pulsed Grid- No.2 Voltage	2000	V
DC Grid No.1 Voltage	-600	V
Peak Positive-Pulse Grid No.1 Voltage	150	V
Peak Plate Current	40 ^c	A
DC Plate Current	5	A
Plate Dissipation (Average)	7.5	kW

MECHANICAL

Operating Position	Any
Weight (Approx.)	5 lb (2.3 kg)

THERMAL^b

Terminal Temperature (All terminals)	250 max. °C
Plate-Core Temperature	250 max. °C

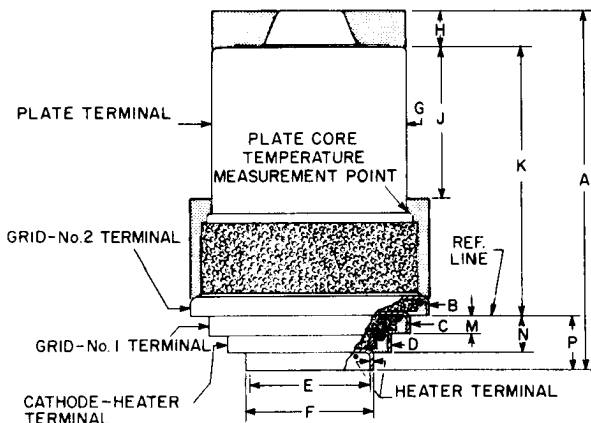
^a See *Electrical Considerations* – Filament or Heater under *RCA Transmitting Tube Operating Considerations* given at front of this section.

^b See *dimensional outline* for temperature measurement points.

^c Keep all stippled regions clear. Do not allow contacts or circuit components to protrude into these annular regions.

Detailed performance and application information is available through your RCA Sales Office, Distributor, or write to RCA Commercial Engineering, Harrison, N.J. 07029.

DIMENSIONAL OUTLINE



CERAMIC

SEE FOOTNOTE (c)

TEMP. MEASUREMENT POINT

92LM-1052VI

DIMENSION	INCHES	MILLIMETERS
A	6.175 Max.	156.85 Max.
B Dia.	3.905 ± .015	99.19 ± .38
C Dia.	3.305 ± .015	83.95 ± .38
D Dia.	2.695 ± .015	68.45 ± .38
E Dia.	1.973 ± .007	49.21 ± .18
F Dia.	2.095 ± .015	53.21 ± .38
G Dia.	3.201 + .002 - .001	81.305 + .051 - .025
H	0.590 ± .010	14.99 ± .25
J	2.593 Min.	65.86 Min.
K	4.470 ± .030	113.54 ± .76
M	0.320 ± .020	8.13 ± .51
N	0.630 ± .020	16.00 ± .51
P	0.940 ± .020	23.88 ± .51